

**SCT**  
**salerno**  
**containerterminal**



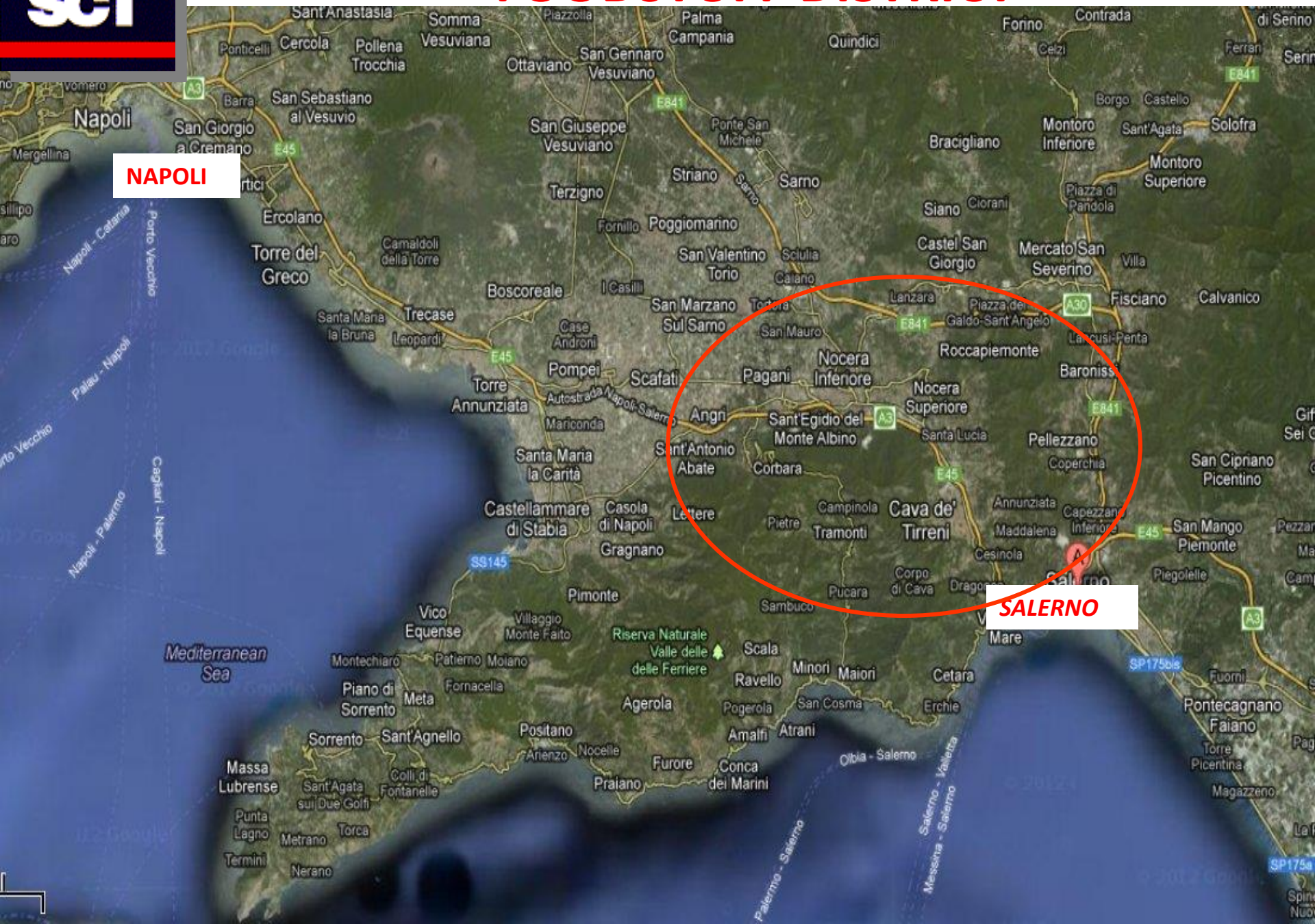
NAPOLI , 12 Aprile 2017  
Palazzo Armieri



## FOODSTUFF DISTRICT

NAPOLI

SALERNO







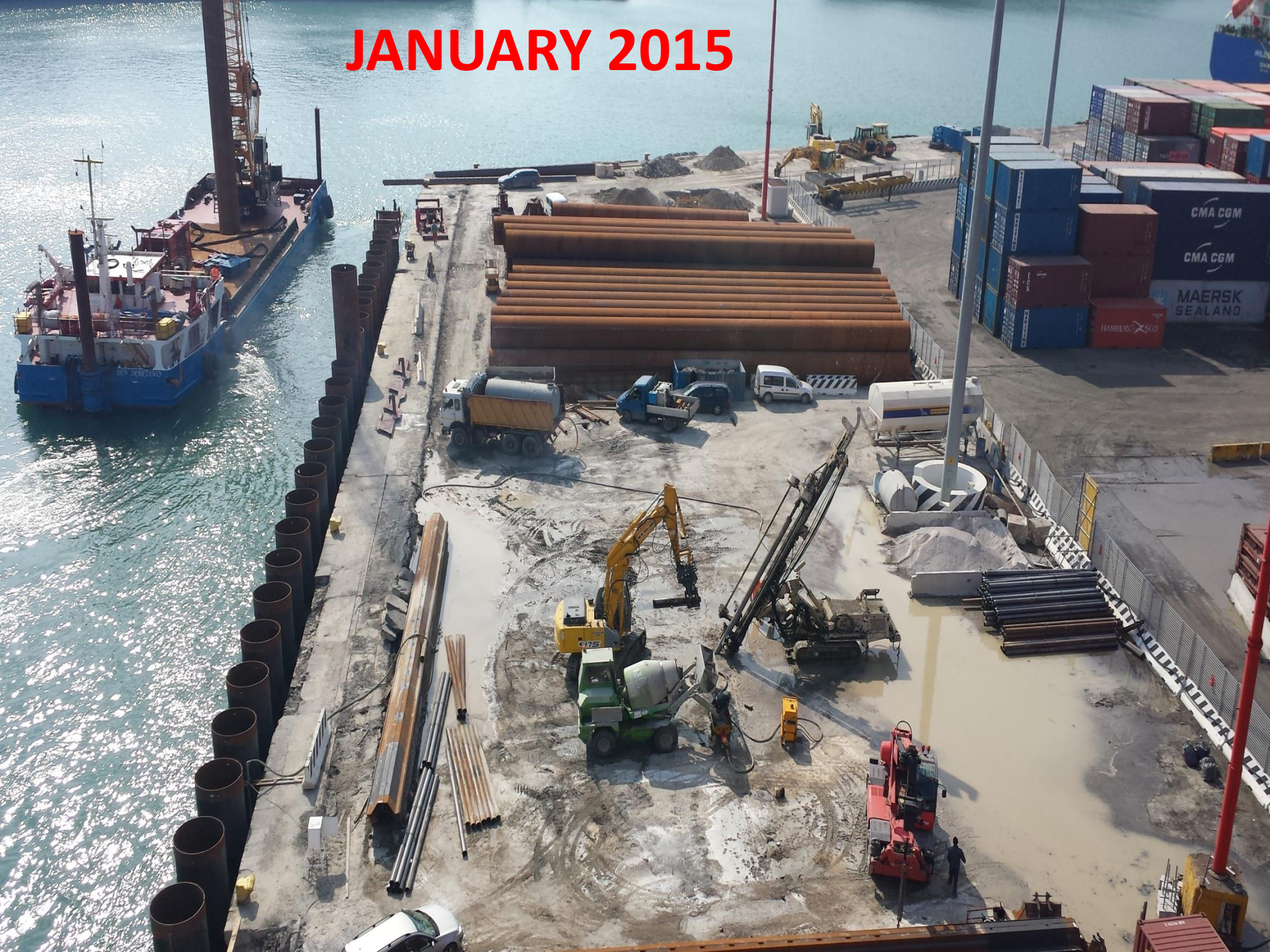


**JANUARY 2015**





**JANUARY 2015**





September 2015





















**SCT**

AUTORITÀ PORTUALE  
SALERNO



**SALERNO PORTA OVEST**

**Tunnel under construction to be completed  
within 2018**

POSEIDON



CERNICCHIARA



SAN LEO



LIGEA



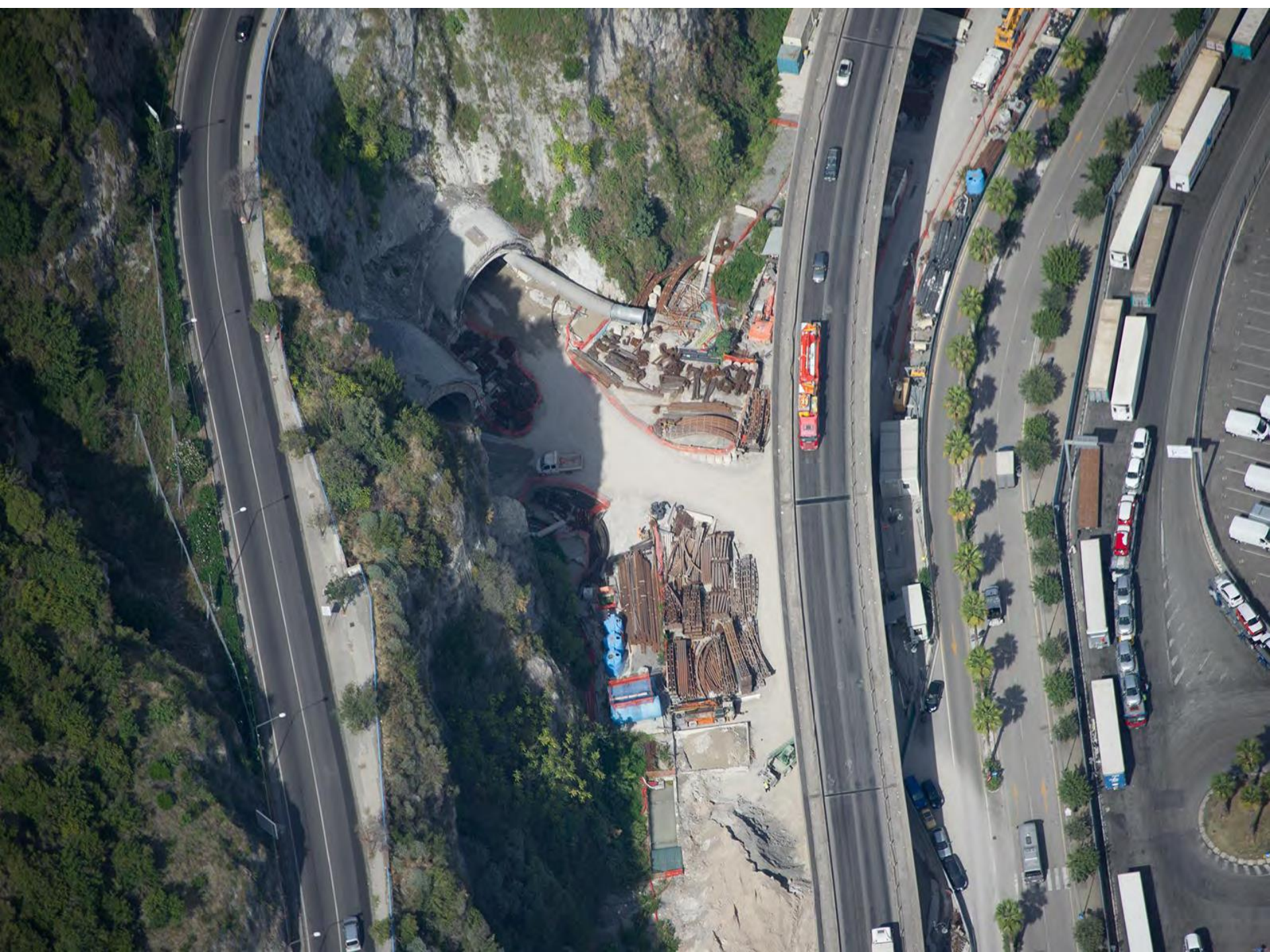




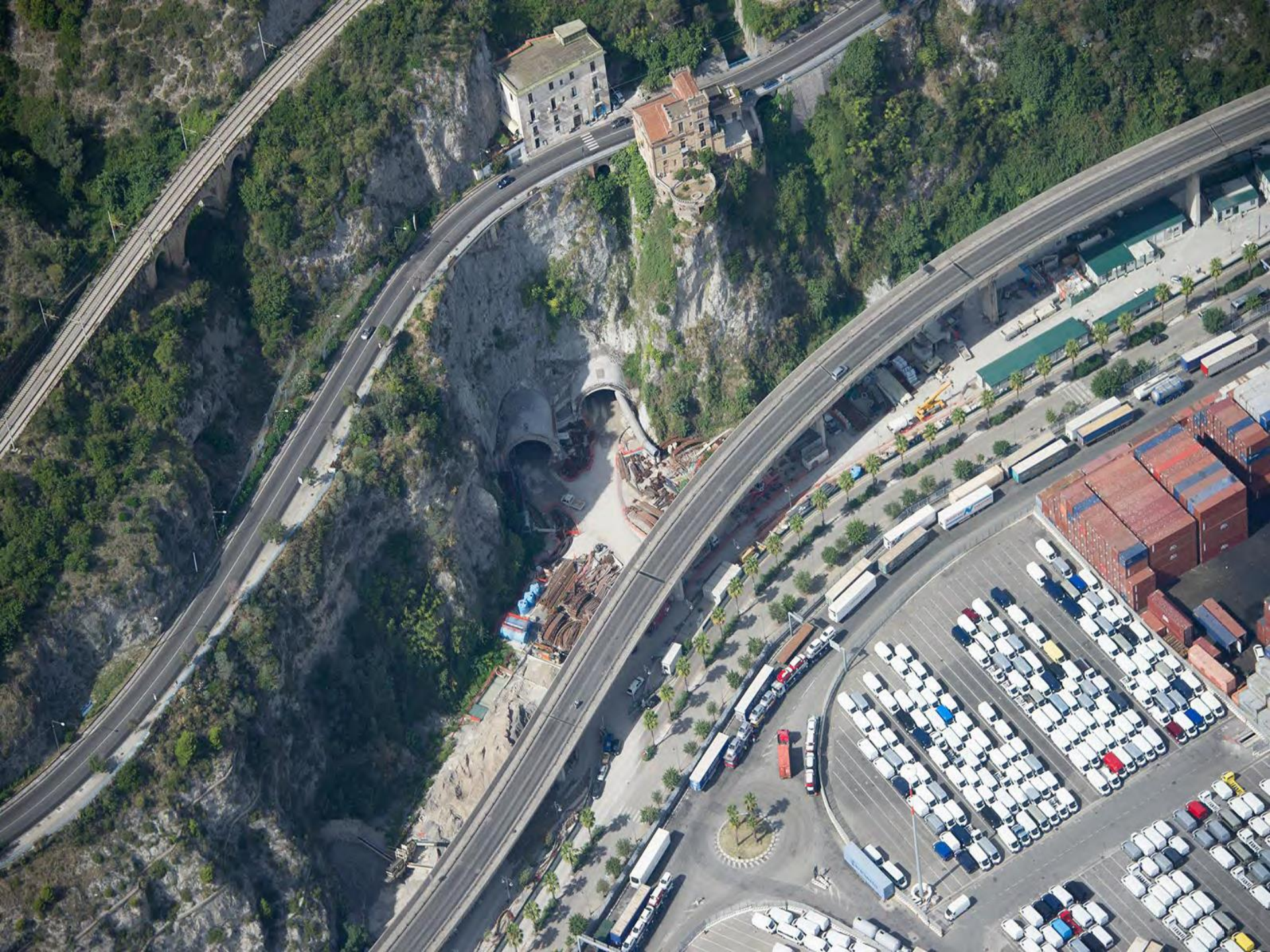
















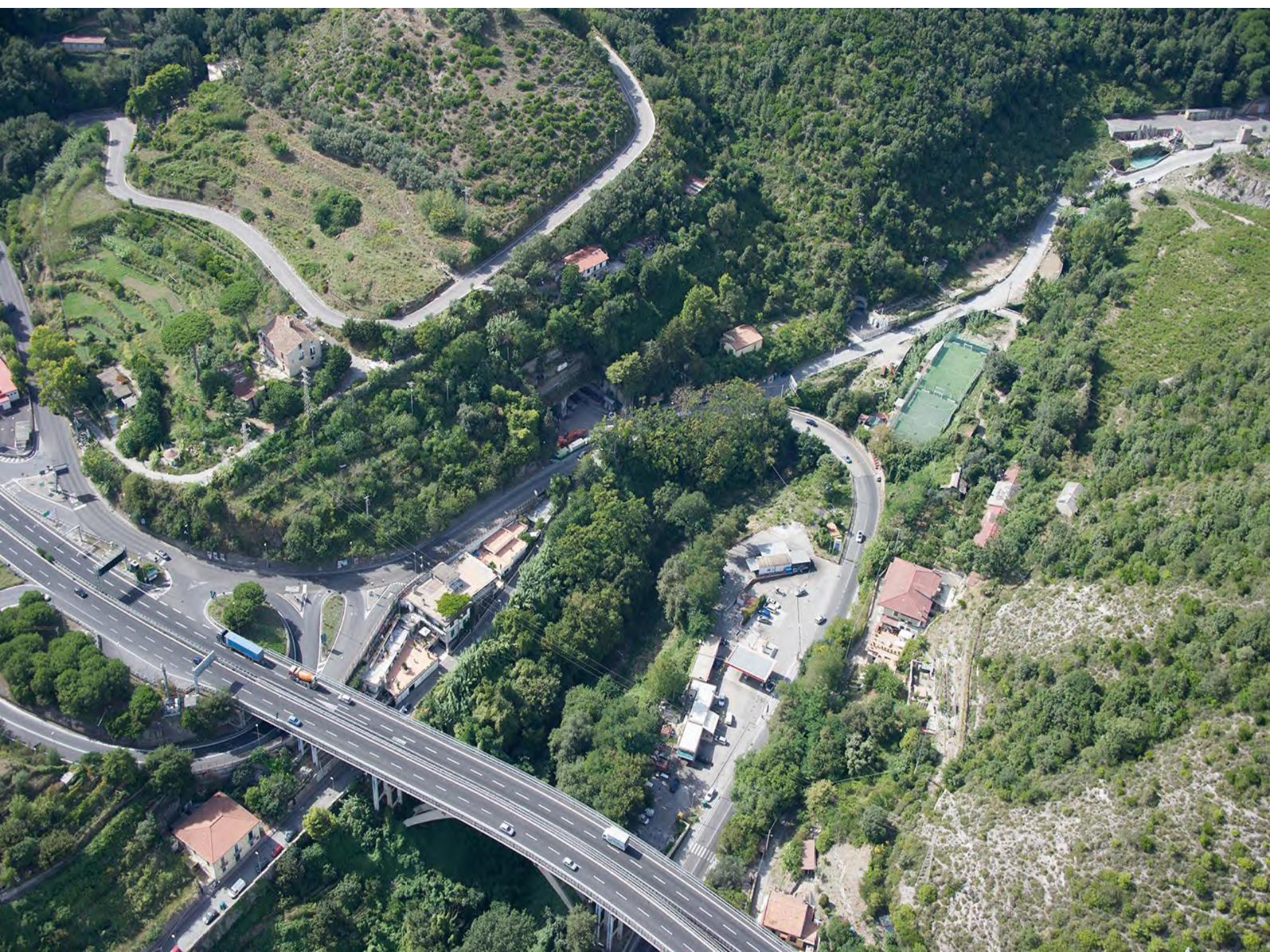




















Costruzione di una Darsena, in testata Molo di Ponente per razionalizzazione e accorpamento degli ormeggi delle unità navali dei servizi tecnico-nautici

Costruzione di una Torre di controllo per i piloti in Testata Molo Sottoflutto. Unitamente all'allargamento dell'imboccatura garantirà un ulteriore aumento della sicurezza della navigazione in Porto

Ampliamento e prolungamento del Molo di Ponente

Ampliamento del Molo Trapezio

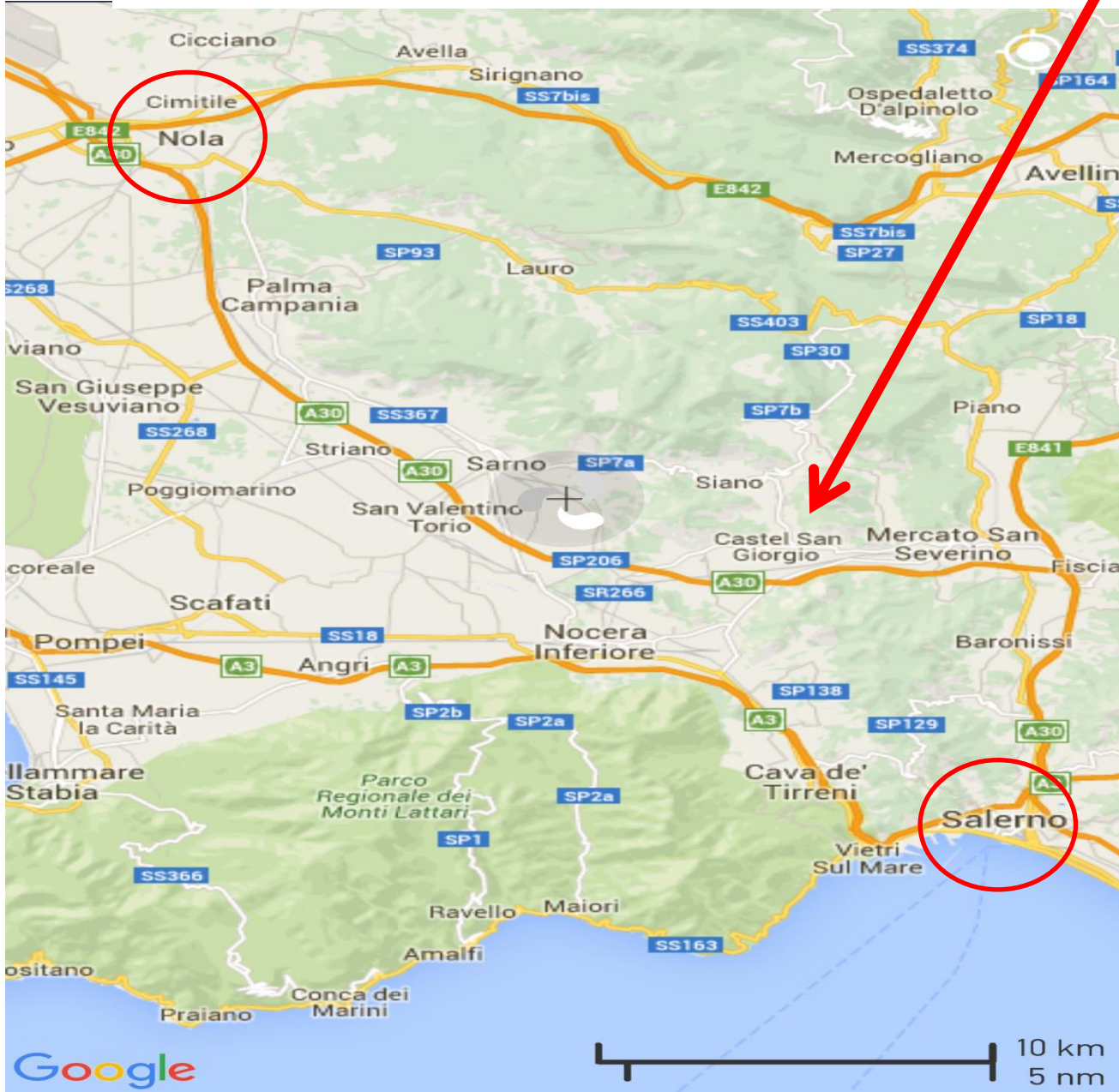
Ampliamento del Molo 3 Gennaio

Perfezionamento del processo di integrazione tra Porto e Città, con la cosiddetta Vecchia Darsena e la Banchina Manfredi dedicate alle attività di pesca, sportive, di diporto e piccola cantieristica

Raddoppio del Molo Manfredi con un allungamento di circa 700 ml per 50 ml di larghezza, per un totale di circa 1.350 ml di lunghezza. Con la Stazione Marittima ideata da Zaha Hadid, il Polo Crocieristico consentirà di ormeggiare fino a cinque navi, con una previsione di oltre diecimila crocieristi al giorno. Impreziosito da giardini e da importanti testimonianze dell'artigianato locale diventerà un vero e proprio prolungamento del lungomare di Salerno



## SCT2: External depot Castel S.Giorgio





# SCT2: External depot Castel S. Giorgio





# SCT2: External depot Castel S.Giorgio





SCT

Salerno container terminal

er terminal

SCT

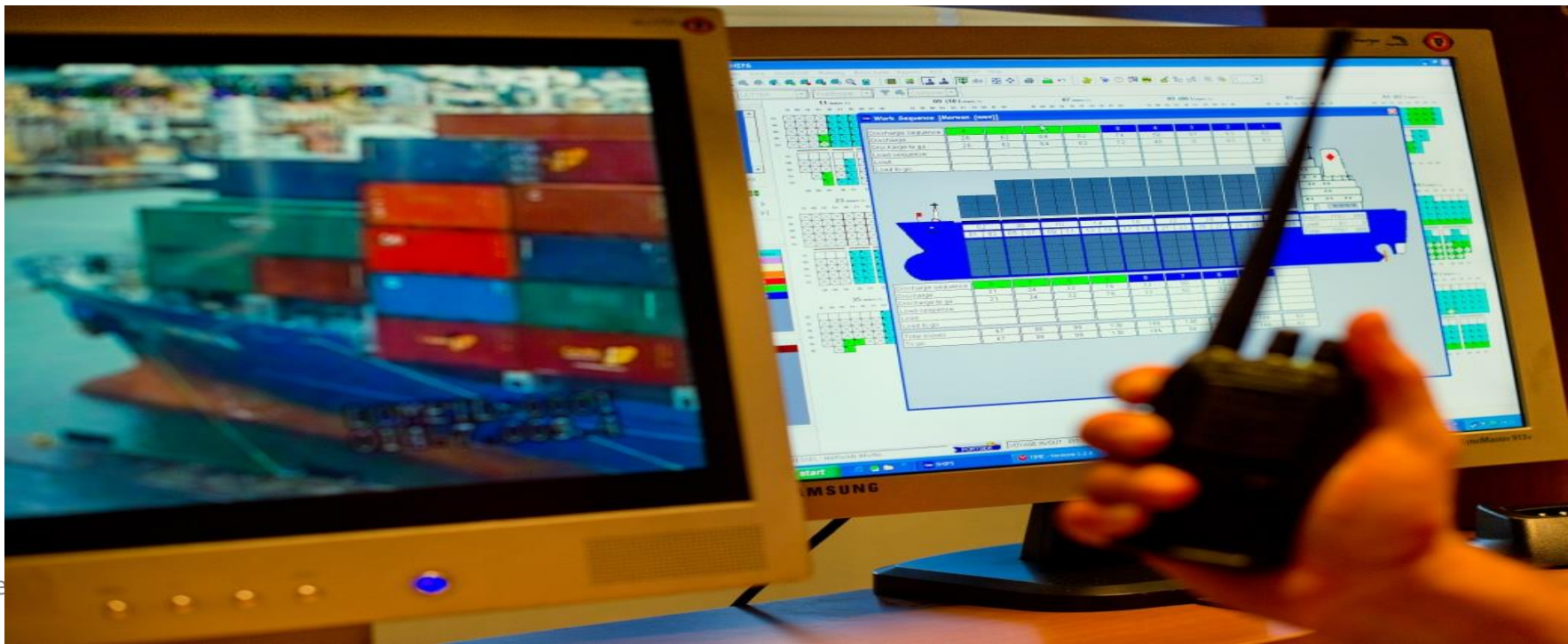




# S.C.T. Office and EDP









## Reliable Container Managment System

**We always know and control the container position (and all the related information) in the yard by a Radio Frequency Order-Execution Management System. All container handler are equipped with efficient industrial computers**

Detail 1 (03B03 / 2)

A	B	C	D	E	F	G	H
INKU 561764 0 IN 20.4 IZM PNR 4510	FSCU 603256 0 IN 19.8 IZM PNR 4510						TTNU 975709 8 OUT 19.8 GIT ZER 4210
TGHU 747981 8 IN 21.5 IZM PNR 4510	FSCU 603179 6 IN 21.0 IZM PNR 4510		TRIU 466847 5 OUT 23.6 GIT ZER 4210	TGHU 724914 2 OUT 27.9 GIT HER 4510	MSKU 663442 0 OUT 24.3 GIT HER ISP 4210	MAEU 818837 0 OUT 23.6 GIT ZER 4210	
CZLU 900023 0 IN 21.5 IZM PNR 4510	CZLU 900041 5 IN 22.0 IZM PNR 4510	TGHU 753387 9 IN 18.0 IZM PNR 4510	TRIU 550617 0 OUT 23.6 GIT ZER 4210	MSKU 661012 0 OUT 20.7 GIT ZER 4210	MAEU 638269 6 OUT 23.8 GIT ZER 4210	SEAU 789283 3 OUT 28.6 GIT ZER 4210	
INKU 286984 4 IN 19.2 IZM PNR 4510	TGHU 724928 7 IN 20.4 IZM PNR 4510	TEXU 556694 1 IN 22.0 IZM PNR 4510	CZLU 900001 4 IN 22.0 IZM PNR 4510	GLDU 090866 3 OUT 28.6 GIT ZER 4210	CAXU 714202 1 IN 24.5 GIT ONE FUM 4210	TOLU 371200 0 OUT 23.8 GIT ZER 4210	MSKU 667517 8 OUT 21.7 GIT ZER 4210
CZLU 900004 0 IN 22.0 IZM PNR 4510	INNU 520598 8 IN 22.7 AMB PNR 4210	CAXU 981686 9 IN 22.0 IZM PNR 4510	CAXU 979520 0 IN 22.0 IZM PNR 4510	HLXU 436290 4 IN 24.4 GIT ONE FUM 4210	MSKU 653559 8 IN 24.7 GIT ONE FUM 4210	SEAU 809953 1 OUT 23.5 GIT ZER ISP 4210	MSKU 659937 6 OUT 24.3 GIT HER ISP 4210

Info on: TTNU 975709 8

Terminal:	SCT	Service OUT:	BSS
Slot status:	EXE	Carrier type OUT:	VS
Area (EXE):	03B	Carrier OUT:	ZER
Slot (EXE):	03B02H5	Voyage OUT:	0528
MCS:	N	POD country:	GP
Container:	TTNU 975709 8	POD place:	PTP
Move:	Export	SPOD country:	IT
Arrival date:	6/7/05	SPOD place:	GIT
Arrival time:	1:14:20 PM	<b>Reservation !</b>	
Load status:	Full	Handling ref. IN:	GOA880158
Length:	40'	Handling:	002136608
Height:	8'6"	type/subtype:	IN
Width:	8'	Handling ref. OUT:	FULL MSK
Type:	DV	Handling:	002149072
ISO:	4210	type/subtype:	OUT
Unit status:	OK		
Material:			
Line:	MSK		
Agent:	MAERSK		
Tare weight:	3500		
Gross weight:	18840		
Weight class:	01		
CSC weight:	00		
CSC date:			
Seal 1:	IT1139632		
type/origin:	/L		
Seal 2:	2205667		
type/origin:	/S		
Service IN:			
Carrier type IN:	TR		
Carrier IN:	BX009PX		
Voyage IN:			
POL country:			
POL place:			

Planning Matrix
 Call Out



**SCT**



**GRASP™**

**RTE**

REFRIGERATED  
TRANSPORT  
ELECTRONICS

Rebuilding the past. Developing the future.



GRASP REEFER REGENERATION MAINTENANCE

File Edit Options View Records Tools Maintenance View System Window

ACTIVE CONTAINERS LIST

CONTAINER	RET	IMP	RET	MODE
GAU4000000	11.1	20.0	17.01	LOW
WVC3100179-0	14.0	20.0	13.01	LOW
WVC3100179-0	21.1	24.1	25.01	FULL
WVC3100000-0	16.1	22.0	20.01	FULL
WVC3100000-0	16.1	20.0	17.01	FULL
WVC3100179-0	4.1	3.0	3.01	LOW
WVC3100179-0	15.1	15.0	15.01	LOW
WVC3100179-0	6.1	6.0	6.01	LOW
WVC3100179-0	18.0	17.0	17.01	LOW
WVC3100179-0	20.0	20.0	20.01	FULL
WVC3100179-0	21.0	20.0	20.01	FULL
WVC3100179-0	1.1	1.0	1.01	LOW
WVC3100179-0	4.1	4.0	4.01	LOW
WVC3100179-0	1.1	1.0	1.01	LOW



## REEFER MONITORING SYSTEM

ISO 10368 DUAL DATA RATE  
POWER CABLE TRANSMISSION (PCT)

MASTER MODEMS

SLAVE MODEMS

TERMINAL EQUIPMENT

VESSEL EQUIPMENT

SITE SURVEYS

CONSULTATION & TRAINING











**we take care of your business...**

**...everyday!**



**salerno**  
**container terminal**